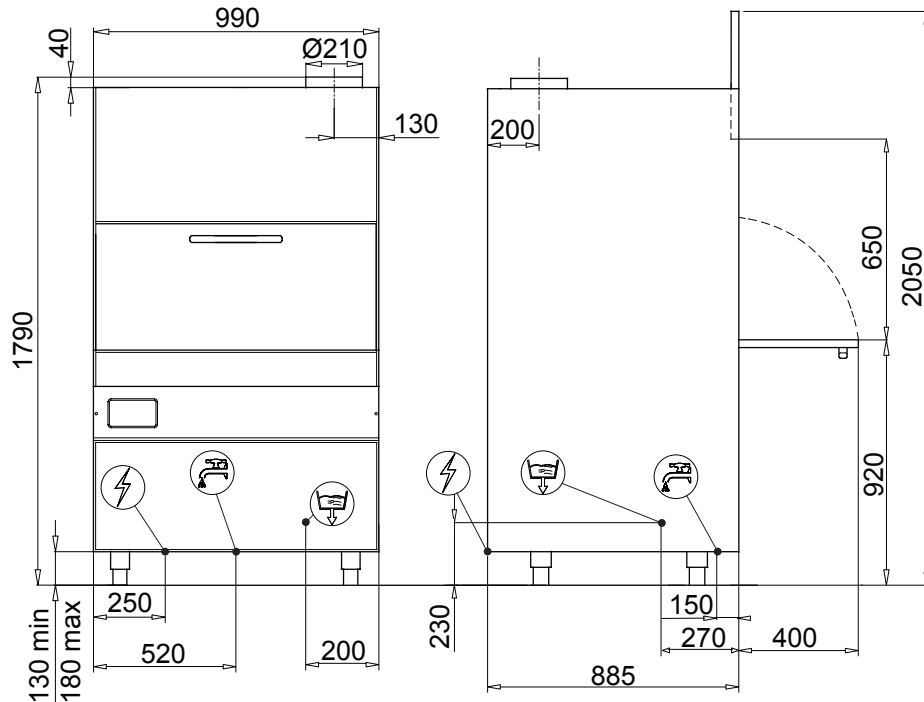


# RP-3 POT & UTENSIL WASHER

The RP-3 is a heavy duty front loading universal pot and utensil washer with a rack size of 850mm x 725mm and a useful chamber height of 645mm.



## Standard Features

- Built in booster heater and thermostop
- Double skinned for efficiency and noise reduction
- Built-in detergent/rinse aid dispensers
- Gravity drained
- Optional: Heat recovery unit\*\*

\*\*Needs hot and cold water connection



**WATER  
SAVING**



**ECO  
FRIENDLY**



|                               |               |
|-------------------------------|---------------|
| Power supply                  | 415V 50 Hz    |
| Total power                   | 14.1KW        |
| Total current                 | 3 X 20 Amp    |
| Wash tank capacity            | 78 ltrs       |
| Water consumption (per cycle) | 4.3 ltrs      |
| Rinsing temp (approx)         | 85°C          |
| Rack size                     | 850mm x 725mm |
| Tallest washable item         | 645mm         |
| Weight (empty)                | 221 kg        |
| Drain hose diameter           | Ø 32mm        |
| Water connection (Hot*)       | 3/4" hose     |

\*Connect to hot water for optimum performance